



The Nautitech® Methane Master with hybrid snout is designed and tested for **STATIC** and **DYNAMIC** conditions where there are sudden shocks in temperature and/or humidity

Designed to monitor and measure the concentration of methane in hazardous environments. Applications include safe start-up or shut-down on mobile plant such as **Diesel and Battery Powered Vehicles**.

The Nautitech® hybrid snout has been developed to address industry challenges with CH<sub>4</sub> systems in environments affected by changes in temperature and humidity

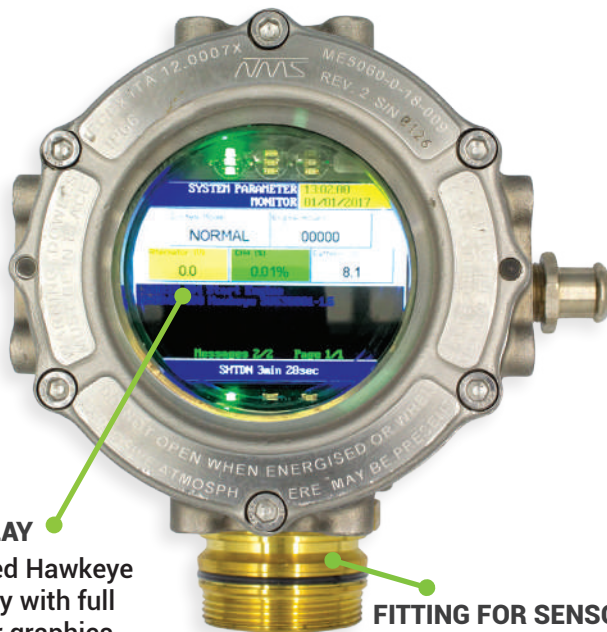


- ✓ Shock resistant to sudden changes in temperature or humidity
- ✓ Intrinsically Safe sensor
- ✓ Rugged stainless steel construction
- ✓ Robust ingress protection
- ✓ Infrared sensing technology
- ✓ Fast warm up times
- ✓ Not susceptible to 'poisoning'
- ✓ Manual and automated time response and telemetry testing to AS2290.3 2018 standards

Leading shut-down & start up system in Australia

## STANDARD COMPONENTS

Manual and automated time response and telemetry testing to AS2290.3.2018 standards



### DISPLAY

Rugged Hawkeye display with full colour graphics

### FITTING FOR SENSOR

With anti-condensation heating

### RAPIDSENSE

#### I.S. SENSOR HEAD

For continuous methane monitoring (with software upgrade)

### SINTERED FILTER KIT

For increased Ingress Protection

### HYBRID SNOOT

Designed for quick removal for cleaning



## Environmental Specifications

Range Methane	Accuracy	Operating Voltage Range	Operating Temperature Range	Humidity
0-5% v/v	0.1% CH <sub>4</sub>	7-16VDC	-20°C to +60°C	0-95% non-condensing



# CUSTOMISE YOUR SYSTEM

# METHANE MASTER

## MEDIUM SYSTEM

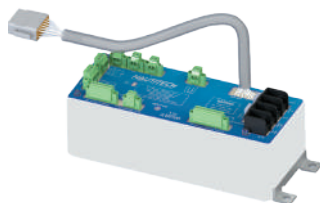
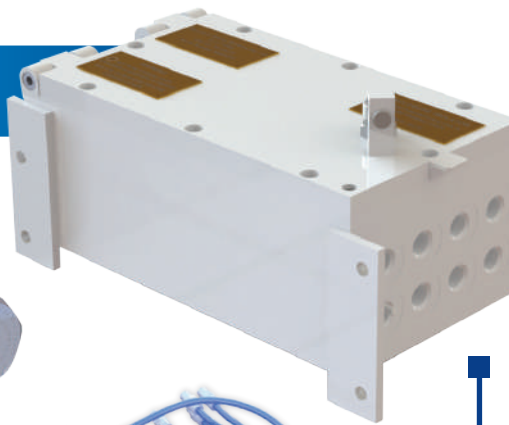
### MEDIUM FLAMEPROOF ENCLOSURE



Battery Charger



Flame Trap



7.2V Battery with I.S. and Non I.S. Outputs



I.S. Barrier



Air Solenoid

## OPTIONS

### Temperature Sensors

For On-Engine and/or remote sensing (0-125°C)



### Deputy Bypass Switch

For authorised override of CH4 sensor



## DATA LOGGING AND ANALYTICS

- Unit for data logging on vehicle CAN networks
- Collect and buffer data from critical vehicle components
- Transfer data to surface via mine network as vehicle passes through WiFi Access Points (WAP)
- Create a dashboard of machine analytics



## PROFILER SPITFIRE



Profiler



Antenna



Connectors

## Certifications



# Harnessing Technology to Keep Miners Safe

Nautitech® is a global Original Technology Manufacturer (OTM) of smart electronic solutions for OEMs and hazardous area mine sites. We keep miners safe - by adapting existing technology to comply with international underground and hazardous area mining standards.

Our equipment delivers **Communications and Visibility**, supports **Automation**, and provides a platform for **Asset and Condition Monitoring** of underground equipment.

Our core products include the **Methane Master** methane monitoring and shutdown systems, **Spitfire®** underground communications, **CUBEx** Intrinsically Safe lights, **Hawkeye** Quad 7" Smart Display and **EXTREMECAM** Thermal and HD Cameras.



## Service & Support

- ✓ AS3800 and IECEx service facility
- ✓ NATA certified calibration lab
- ✓ Field installation, maintenance & training
- ✓ Audits & compliance checks of explosion proof equipment including diesel machines
- ✓ 12 months warranty on new parts

## We offer full product life cycle support

The reliability and quality of NAUTITECH® solutions have been proven to provide a competitive advantage.



### New South Wales

3/9 Packard Avenue  
Castle Hill, NSW 2154

+61 2 9899 6857  
+61 417 711 018  
sales@nautitech.com.au



### Queensland

14 John Vella Drive  
Paget, QLD 4740

+61 7 4911 4171  
+61 400 268 755  
sales@nautitech.com.au



### South Africa

Middelburg, Mpumulanaga  
South Africa

+27 78 800 2589  
sales\_za@nautitech.com.au