

## Passionate About Innovation

NAUTITECH® is an Australian provider of smart electronic and electrical solutions for OEMs and mine sites in the underground mining industry. We design and manufacture equipment that delivers **Communications** and **Visibility**, supports **Automation**, and provides a platform for **Asset and Condition Monitoring** of underground equipment.

Our core products include **Methane Monitoring** and **Shutdown** systems, **Underground Communications**, **Thermal** and **HD Cameras**, **IS Lights** and **Displays**. We collaborate, test, and research to continually improve what we deliver to our customers.

## Service & Support

- ✓ AS3800 and IECEx service facility
- ✓ NATA certified calibration lab
- ✓ Field installation, maintenance & training
- ✓ Audits & compliance checks of explosion proof equipment including diesel machines
- ✓ 12 months warranty on new parts

## We offer full product life cycle support

The reliability and quality of NAUTITECH® solutions have been proven to provide a competitive advantage.



**NAUTITECH®**  
HARNESSING TECHNOLOGY TO KEEP MINERS SAFE

# METHANE MASTER

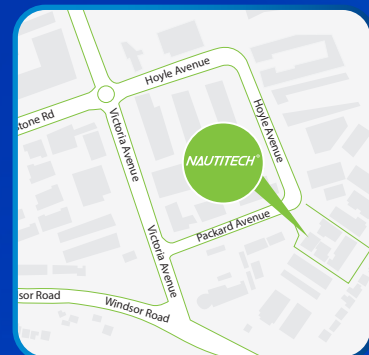


## Leading shut-down & start up system in Australia

Designed to monitor and provide indication of the concentration of methane in hazardous environments. Applications include safe start-up or shut-down on mobile plant such as **Diesel Powered Vehicles** and other mining machinery.



- ✓ Intrinsically Safe sensor
- ✓ Shock resistant to Temperature and Humidity
- ✓ Rugged stainless steel construction
- ✓ Robust ingress protection
- ✓ Infrared sensing technology
- ✓ Fast warm up times
- ✓ Not susceptible to 'poisoning'
- ✓ Manual and automated time response and telemetry testing to AS2290.3.2018 standards



### New South Wales

3/9 Packard Avenue  
Castle Hill, NSW 2154

+ 61 2 9899 6857  
sales@nautitech.com.au



### Queensland

14 John Vella Drive  
Paget, QLD 4740

+ 61 7 4911 4171  
+ 61 488 221 031  
sales@nautitech.com.au



### South Africa

Middelburg, Mpumulanaga  
South Africa

+ 27 78 800 2589  
sales\_za@nautitech.com.au

## Full 1-Year Warranty



## STANDARD COMPONENTS

Manual and automated time response and telemetry testing to AS2290.3.2018 standards



**DISPLAY**  
Rugged Hawkeye display with full colour graphics

**FITTING FOR SENSOR**  
With anti-condensation heating

**RAPIDSENSE I.S. SENSOR HEAD**  
For continuous methane monitoring

**SINTERED FILTER KIT**  
For increased Ingress Protection

**SNOUT**  
Designed for quick removal for cleaning

## MEDIUM SYSTEM

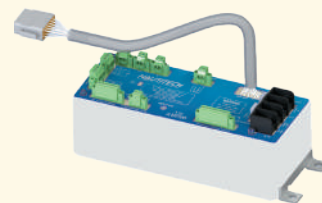
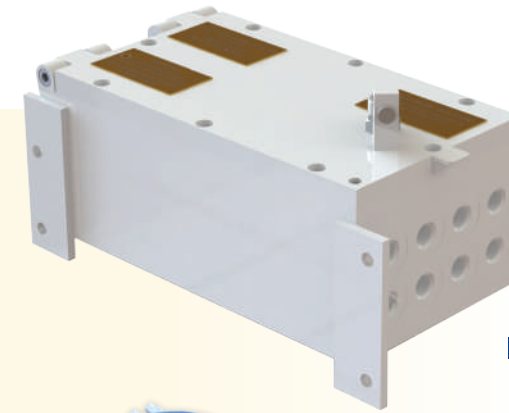
### MEDIUM FLAMEPROOF ENCLOSURE



Battery Charger



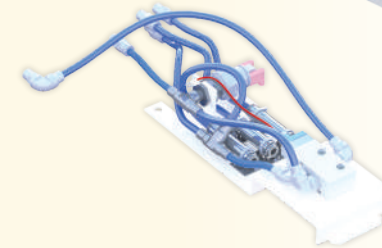
Flame Trap



7.2V Battery with I.S. and Non I.S. Outputs



I.S. Barrier



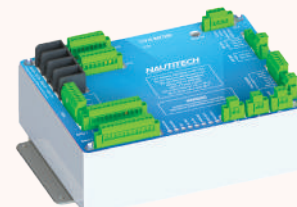
Air Solenoid

## LARGE SYSTEM

### LARGE FLAMEPROOF ENCLOSURE



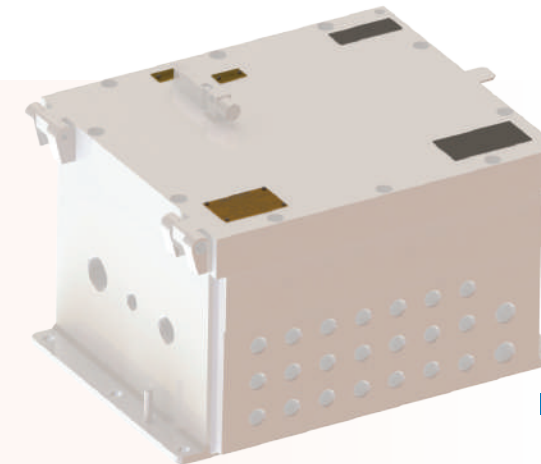
PMU: Power Management Unit



12V Battery with I.S. and Non I.S. Outputs



Flame Trap



ECU: Engine Conditioning Unit



I.S. Power Supply



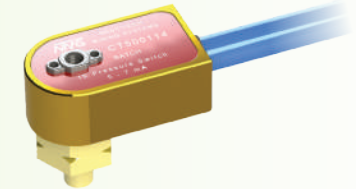
Air Solenoid

## OPTIONS

**Deputy Bypass Switch**  
For authorised override of CH4 sensor



**Pressure Switches**  
Customisable to any defined pressure range



**Pressure Sensors**  
Low pressure (0-100kpa) to high pressure (0-3500kpa)



**Switches**  
Allows for customisable switching



**Can Gauges**  
Pedal position, linear floats, switch based floats, 6-switch Can Gauge, 3-axis Gyro



**Temperature Sensors**  
For On-Engine and/or remote sensing (0-125°C)



## Environmental Specifications

Range Methane	Accuracy	Operating Voltage Range	Operating Temperature Range	Humidity
0-5% v/v	0.1% CH4	7-16VDC	-20°C to +60°C	0-95% non-condensing

## Certifications

