

Passionate About Innovation

NAUTITECH® is an Australian provider of smart electronic and electrical solutions for OEMs and mine sites in the underground mining industry. We design and manufacture equipment that delivers **Communications** and **Visibility**, supports **Automation**, and provides a platform for **Asset and Condition Monitoring** of underground equipment.

Our core products include **Methane Monitoring** and **Shutdown** systems, **Underground Communications**, **Thermal** and **HD Cameras**, **IS Lights** and **Displays**. We collaborate, test, and research to continually improve what we deliver to our customers.

Service & Support

- ✓ AS3800 and IECEx service facility
- ✓ NATA certified calibration lab
- ✓ Field installation, maintenance & training
- ✓ Audits & compliance checks of explosion proof equipment including diesel machines
- ✓ 12 months warranty on new parts

We offer full product life cycle support

The reliability and quality of NAUTITECH® solutions have been proven to provide a competitive advantage.

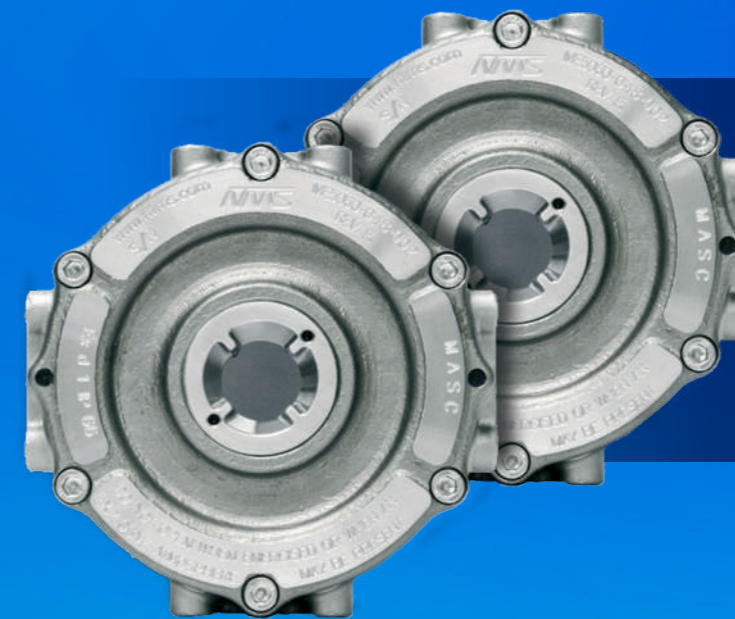


ExTREMECAM

Get better vision for higher productivity and safety

Thermal, HD and IR cameras by Nautitech® add an important element for visual monitoring within the mine site and can be used on mobile or stationary applications including Longwall, Development equipment, mobile machinery, belt conveyors, and other heavy industrial use.

Fully compatible with Nautitech® Hawkeye Displays

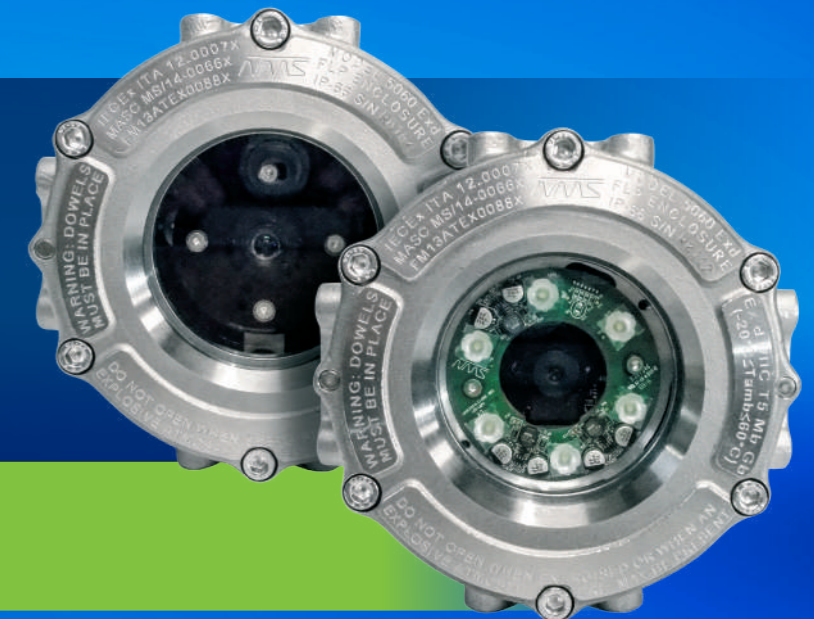


Thermal Cameras

- Facilitate critical decision making in hazardous areas with impaired visibility due to fog, dust, heat or darkness
- Display workers, cables, machines and other heat sources

HD and IR Cameras

- Multiple lens options and wide selection of video compression and resolution
- Available with IR or built-in white LED lights for additional illumination



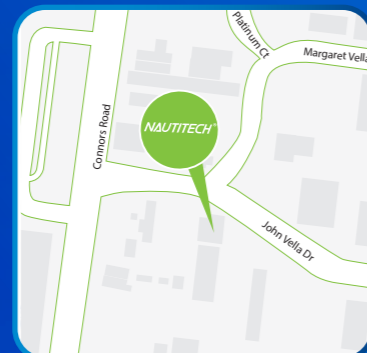
Full 1-Year Warranty



New South Wales

3/9 Packard Avenue
Castle Hill, NSW 2154

+ 61 2 9899 6857
sales@nautitech.com.au



Queensland

14 John Vella Drive
Paget, QLD 4740

+ 61 7 4911 4171
+ 61 488 221 031
sales@nautitech.com.au



South Africa

Middelburg, Mpumulanaga
South Africa

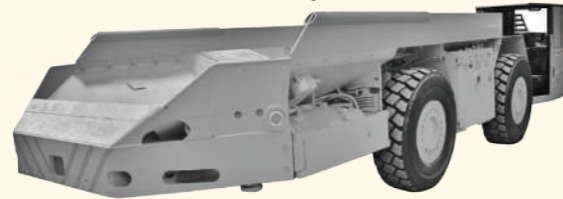
+ 27 78 800 2589
sales_za@nautitech.com.au

THERMAL CAMERA

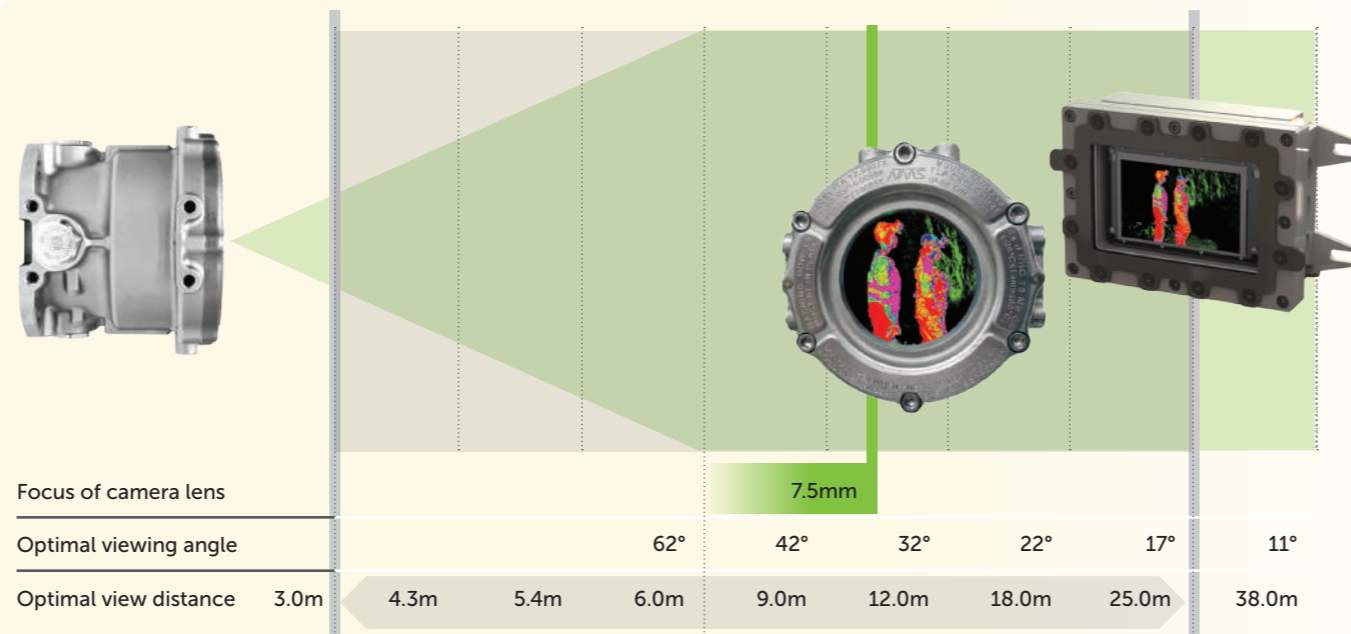
The thermal camera is not affected by fog, dust or darkness as it uses radiation from the far infrared region of the spectrum

Operational Benefits

- Situational awareness in darkened locations
- Monitor heat sources such as belt rollers and cables
- Reversing machinery into unlit locations
- Analysing stock piles or transfer points
- Marker band identification during cutting cycles
- Personnel detection
- Increased driver visibility in low seams



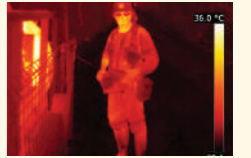
Typical Applications: Longwall, development equipment, mobile machinery, belt conveyors and heavy industrial use



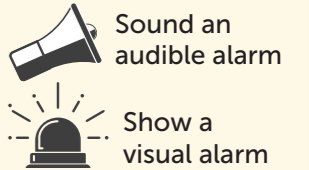
Camera Analytics

Thermal image displayed via Hawkeye IQ allows for the application to determine subsequent actions

✓ Detect personnel in view of camera



✓ Take one or more of the following actions as a warning system



✓ Monitor machinery and coal stockpile for potential hazard



HD and IR Cameras

HD Camera displays high definition colour video in the visible spectrum

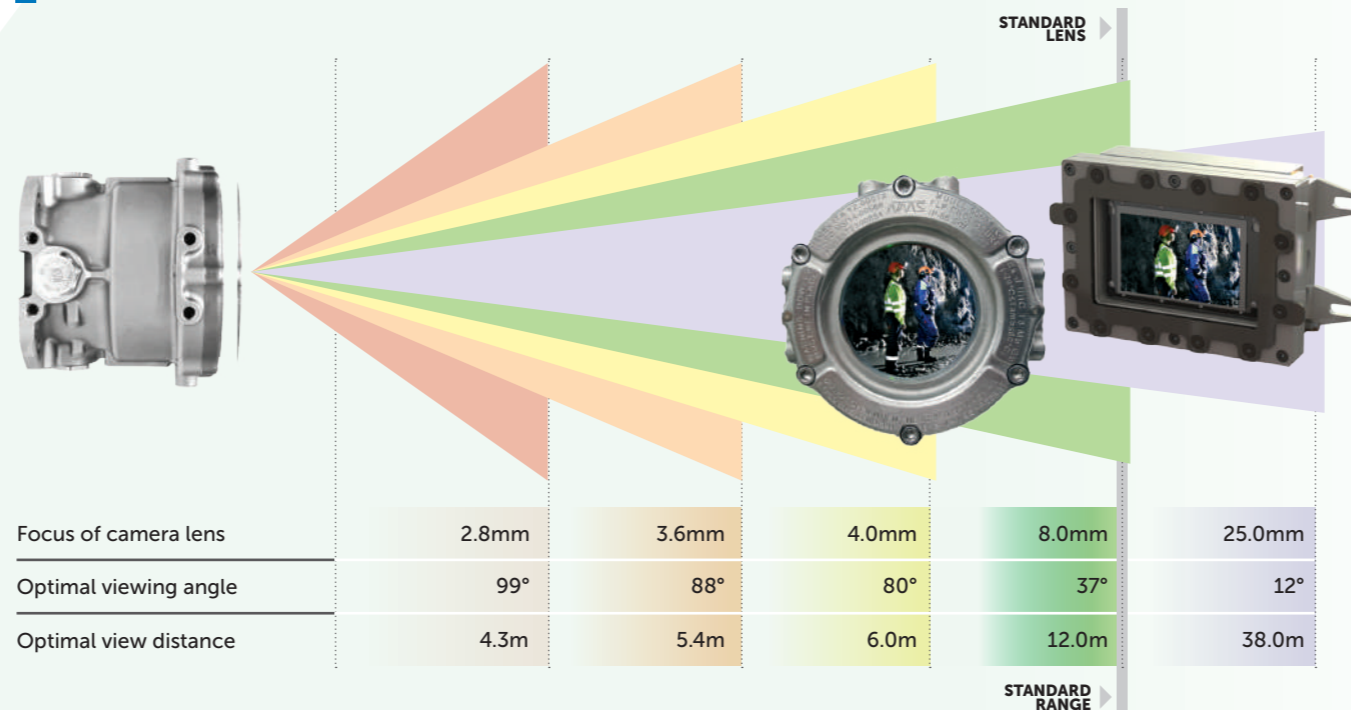
IR Camera is ideal for night vision as it detects infrared energy and converts it into an image

Operational Benefits

- Remove operators from hazardous, dusty areas
- Monitor transfer points
- Blind spot display (reversing)
- Driver awareness
- Supports ONVIF streaming Protocol
- General surveillance
- Available with optional lighting and Wi-Fi

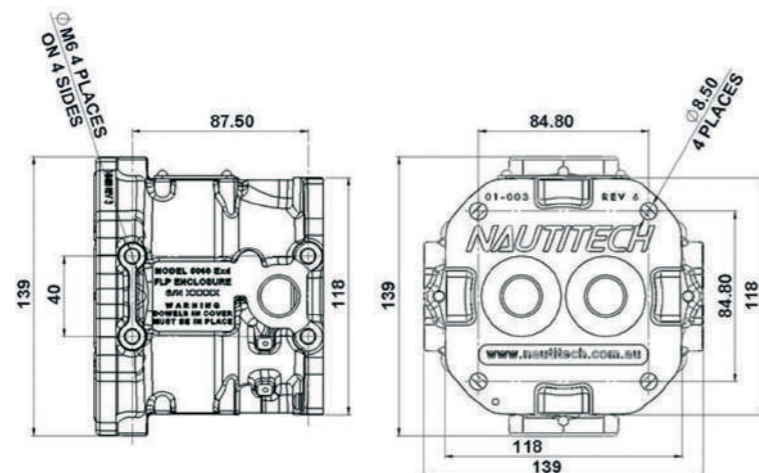


Typical Applications: Longwall, development equipment, mobile machinery, belt conveyors and heavy industrial use



Dimensions

- Robust 316 S/S enclosure
- IP66 (Ingress Protection Rating)
- Multiple rear and side gland entries



Environmental Specifications

Operating temperature	-40°C to +60°C (External temperature)
Storage temperature	-55°C to +95°C (External temperature)
Shock	50G - 3Axis
Bump	15G - 3 Axis
Vibration	Random Vibration 3 Axis (7Hz - 500Hz)
Humidity	5 - 95% non-condensing
Sinusoidal Resonance	IEC60068-2-6
Random Vibration	MIL-STD810G
Bump and Shock Test	IEC60068-2-27

Electrical Specifications

Supply voltage (all cameras)	12V - 24V AC/DC
Power (EXTREMECAM with IR lights)	<= 9.5W
Power (All other cameras)	<= 4.5W

